


4 CORNERS SEL ACTIVITY/ENGAGE - BRIDGE EMPATHY FOR WILDLIFE TO SCHOOLS

Content Areas: Social Emotional Learning (SEL), Animal Behavior, General Biology

Materials List: Signs, popsicle sticks, or other way for students to show their choices.

 **Empathy Best Practice:** Perspective taking, storytelling

 **Conservation Connection:** Nature-focused experiences foster appreciation for animals and their environments as well as raise awareness of conservation issues and possible solutions.

 **Tangible Action:** Take a few moments to enjoy nature and put yourself in the position of an animal within that area.



Background Info: Students reflect on a statement, image, or prompt and move to a "corner" that matches their choice. There they share their rationale for choosing that corner with others before the whole group reconvenes.

"Corners" is helpful in promoting the importance of divergent perspectives and the value of having all voices heard. Participants have the opportunity to connect with others, while hearing a variety of reasons for being drawn to the common category. The activity also incorporates movement and injects energy into the room.



Procedures:

1. Post signs around classroom for students to move towards OR use small signs for each student OR another method for students to move/show their choices between the four emotions (like hand signals).
2. Use provided scenarios for students to reflect, choose, discuss.
 - a. Note: if a "corner" ends up with a solo student, then join them to hear their thoughts and discuss.

Discussion: During the movements to the "corners", small groups can discuss their thoughts and the teacher can facilitate larger discussion with class; choose someone from each "corner" to share their reasoning. Students and teachers are encouraged to research animals after the activity and reassess their initial reactions after learning animal natural history.

Zoo Boise video: Animal Perspective Taking

Available for teachers to watch ahead of time for background info, examples, etc. and could share with students or assign to watch after the activity.





Welcoming/Inclusion Activity

Four Corners

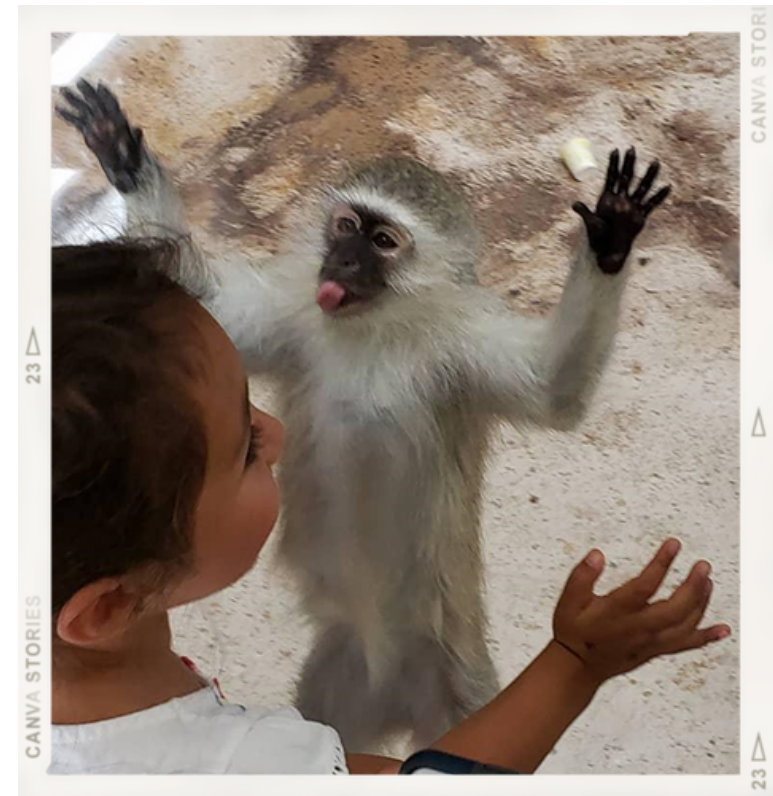


SEL Focus:

Participants will be practicing the **Responsible Decision-Making** skills of ***Situation Analysis*** and ***Evaluating*** as they choose and discuss their “corner” choice, and are developing the **Social Awareness** skills of ***Perspective-Taking*** and ***Empathy*** as they listen to understand each other’s choices and reasoning.

Empathy for Wildlife Practices overlap with Social Emotional Learning (SEL) Skills

- Assuring Well-being
- Introducing the Animal
- Informing our Audience
- Inviting Perspective-Taking
- Connecting to Caring Action



Curious



Happy

Post signs around classroom for students to move towards
OR use small signs for each student OR another method
for students to move/show their choices between the
four emotions (like hand signals)

Scared



Upset

Scenario 1:

You are Toogle, the Southern Ground Hornbill.

Your keeper enters your home and brings you a mouse to eat.

How do you feel?

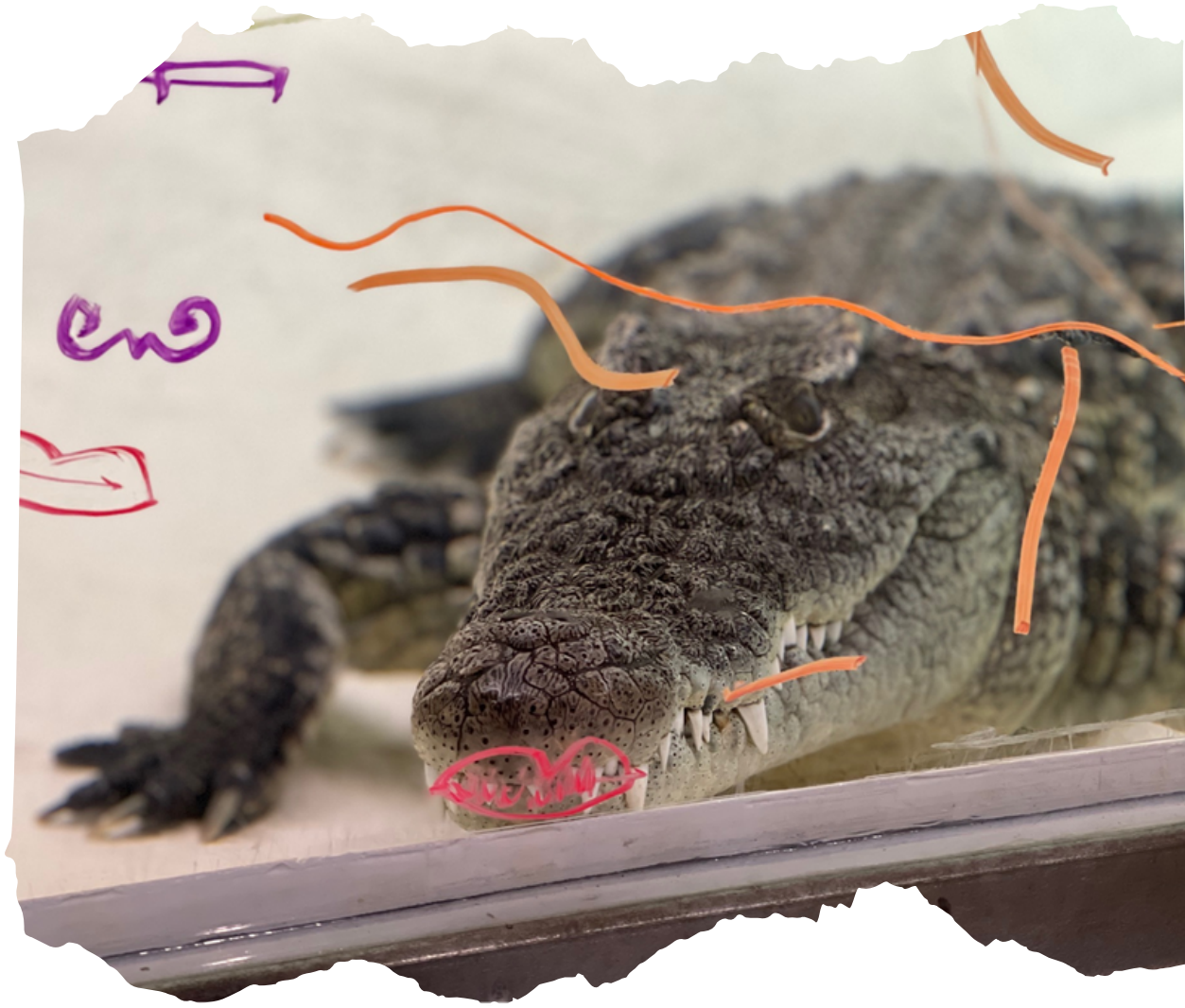


Scenario 2:

You are Pandora,
the Nile Crocodile.

A group of twenty
4th graders are
drawing on your
windows to provide
enrichment.

How do you feel?

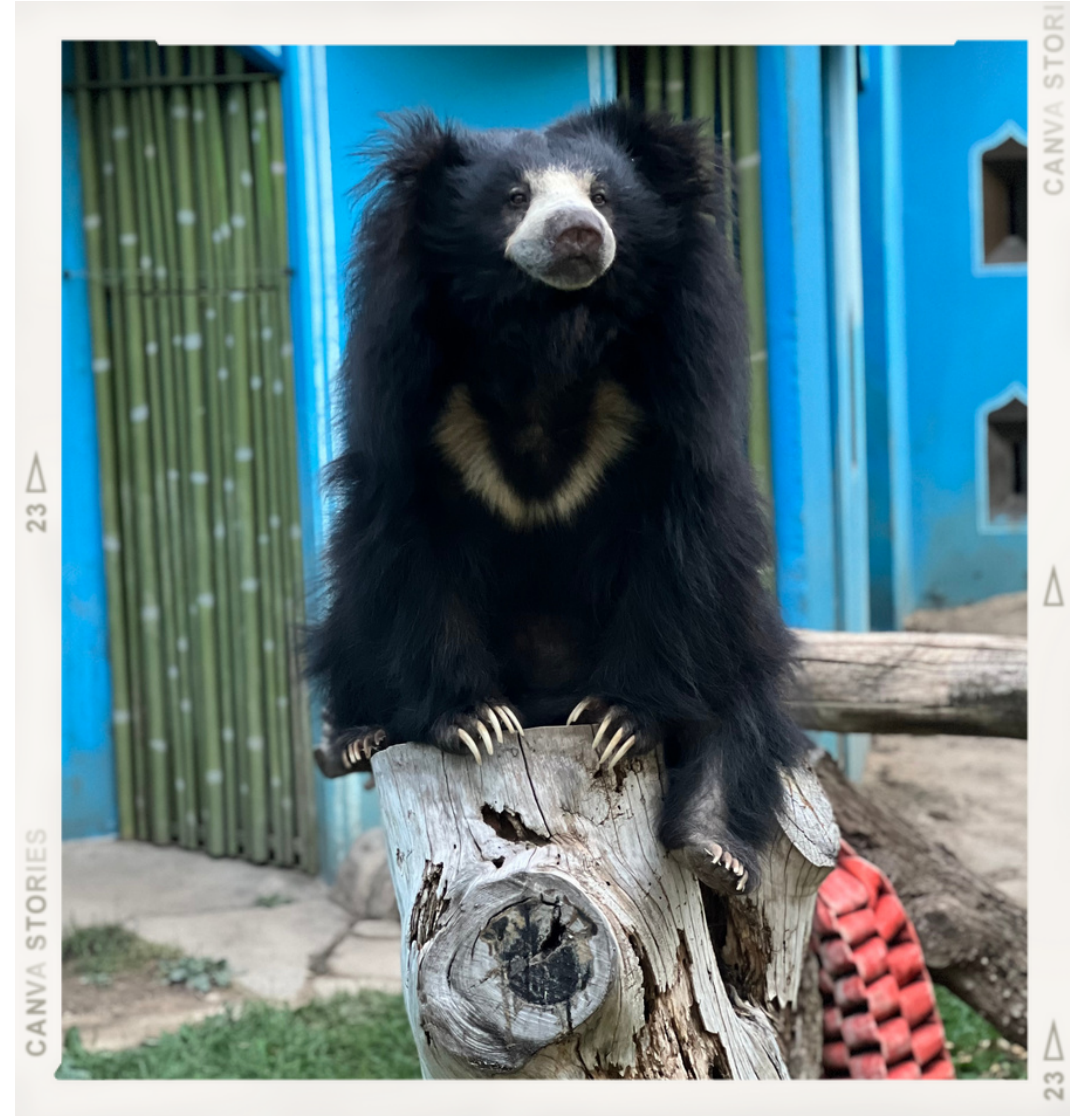


Scenario 3:

You are Paji, the Sloth Bear.

It is 10:30 am and you are ready for your mealworm enrichment. Three guests are calling out to you from above.

How do you feel?



Scenario 4:

You are Dolly, the Red Panda.

You have new twins, Natasha & Ginger.

Natasha was taken out of the den for a vet exam.

How do you feel?



Now let's change it up a bit...leaving Zoo Boise

Scenario 5:

You are a Red Panda (*Ailurus fulgens*) living in the Himalayas.

The cubs you gave birth to earlier this year has gone off on their own.

How do you feel?

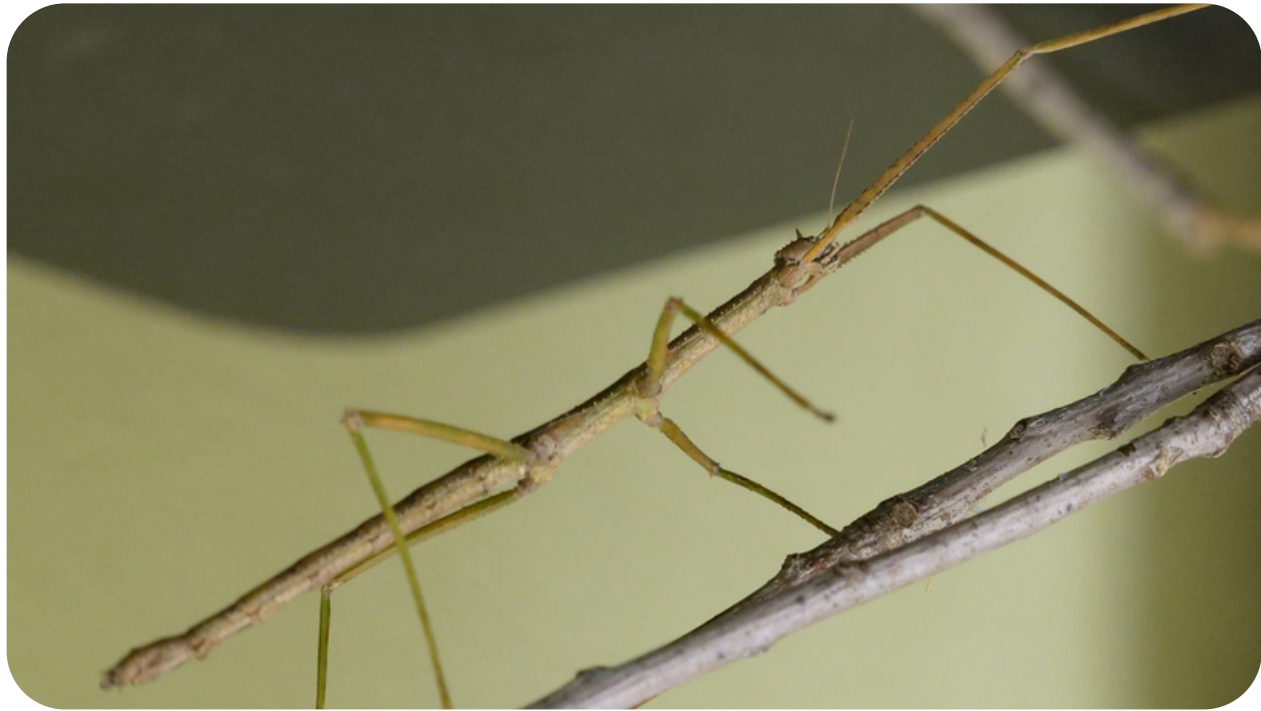


Scenario 6:

You are an Annam Stick Insect
(*Medauroidea extradentata*).

As you are chewing on a leaf, a bird lands on
a nearby branch.

How do you feel?



Scenario 7:

You are a Black-Handed Spider Monkey (*Ateles geoffroyi*)

You live in El Salvador.
Many other monkeys in
your area were captured
or killed by poachers.

How do you feel?



Ideas/Options

1. Small circles for each student
2. Medium circles and attach to popsicle sticks
3. Large circles to post around room

Curious



Happy



Scared



Upset



Curious



Happy



Scared



Upset



Curious



Happy



Scared



Upset

